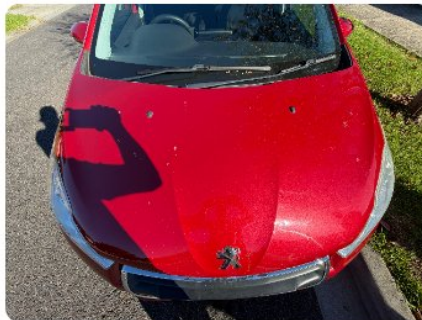


Basic Pre-purchase Car Inspection Report

Make and Model Lexus Hybrid	Model Year 2016	Rego / VIN N/A
Odometer 222222 KM	Transmission N/A	Inspection Date 28 April 2026



Inspection Summary

Overall Rating

3.2 / 5.0



Based on Basic Inspection Package

Body Panels 3.0 ★★★★☆	Structural 3.5 ★★★★☆
Lights No ratings	Wheels and Tyres 2.8 ★★★★☆
Engine Bay 3.1 ★★★★☆	Exhaust and Underbody 3.0 ★★★★☆
Interior 3.9 ★★★★☆	Test Drive 4.1 ★★★★☆

Inspector Comment

No overall comment provided.

A Afaq
Inspector, Aussie Car Inspect

Repair Cost

Estimated Repair Cost: **N/A**

⚠ Attention Needed

The following items scored below 3.0 and require attention before purchase.

Front bumper bar

2.5

Body Panels



Inspected for cracks, dents, paint damage, and alignment.



Front Right — Drive shaft / CV boots / joints

2.0

Wheels and Tyres



Front Right — Wheel bearings

2.5

Wheels and Tyres



Front Left — Springs and shock absorbers

2.5

Wheels and Tyres



Rear Right — Tyre

2.5

Wheels and Tyres



Rear Left — Tyre

2.5

Wheels and Tyres



Ball joints

2.0

Wheels and Tyres



Front bumper bar

2.5



Inspected for cracks, dents, paint damage, and alignment.

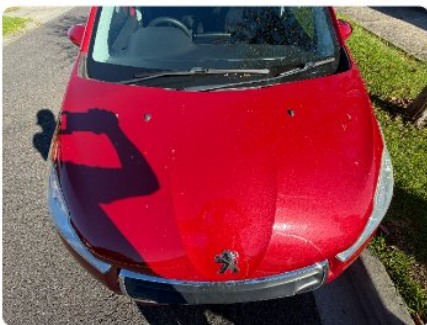


Bonnet

3.0



Checked for dents, paint condition, and hinge alignment.



Front right quarter panel

3.0



Inspected for dents, scratches, and paint consistency.

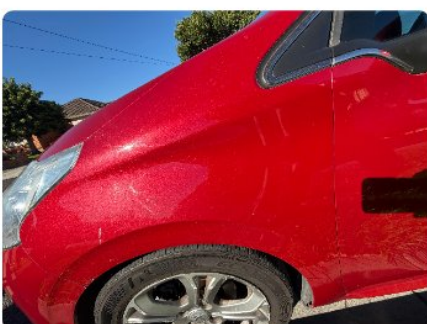


Front left quarter panel

3.0



Inspected for dents, scratches, and paint consistency.



Front right door

3.0

★★★★★

Checked operation, alignment, and panel condition.



Front left door

3.0

★★★★★

Checked operation, alignment, and panel condition.



Rear right door

3.0

★★★★★

Checked operation, alignment, and panel condition.



Rear left door

3.0

★★★★★

Checked operation, alignment, and panel condition.



Rear right quarter panel

3.0

★★★★★

Inspected for dents, scratches, and paint consistency.



Rear left quarter panel

3.0

★★★★☆

Inspected for dents, scratches, and paint consistency.



Roof panel

4.0

★★★★☆

Checked for hail damage, dents, and paint condition.



Sunroof / Convertible

No

Repair works detected

No

Any Issues / Defects Found?

Yes

Minor scratches on the body

Structural

3.5 ★

A-pillar

4.0

★★★★☆

Inspected for deformation, rust, or repair evidence.



B-pillar

4.0

★★★★☆

Inspected for deformation, rust, or repair evidence.



C-pillar

4.0

★★★★☆

Inspected for deformation, rust, or repair evidence.



Rear chassis rails

3.0

★★★★☆

Checked for rust, cracks, and structural integrity.



Front chassis rails

3.0

★★★★☆

Checked for rust, cracks, and structural integrity.



Cross members

3.0

★★★★★

Inspected for corrosion and deformation.



Any Issues / Defects Found?

No

Lights

SECTION PHOTOS



Headlights

Working

High beam / Low beam

Working

Fog lights

Working

Tail lights

Working

Brake lights

Working

Number plate light

Working

Any Issues / Defects Found?

No

Wheels and Tyres

2.8 ★

Front Right — Wheel

★★★★☆

3.0



Front Right — Tyre

3.0

★★★★☆



Front Right — Brake pads and rotors

3.0

★★★★☆



Front Right — Control arms

3.0

★★★★☆



Front Right — Springs and shock absorbers

3.0

★★★★☆



Front Right — Drive shaft / CV boots / joints

2.0

★ ★ ★ ★ ★



Front Right — Wheel bearings

2.5

★ ★ ★ ★ ★



Front Left — Wheel

3.0

★ ★ ★ ★ ★



Front Left — Tyre

3.0

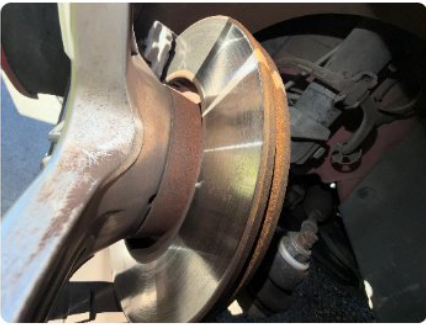
★ ★ ★ ★ ★



Front Left — Brake pads and rotors

3.0

★★★★★



Front Left — Control arms

3.0

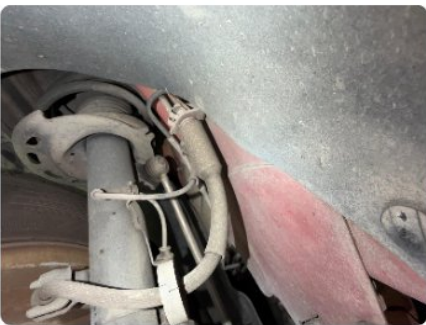
★★★★★



Front Left — Springs and shock absorbers

2.5

★★★★★



Front Left — Drive shaft / CV boots / joints

3.0

★★★★★



Rear Right — Wheel

3.0

★★★★☆



Rear Right — Tyre

2.5

★★★★☆



Rear Right — Brake pads and rotors

3.0

★★★★☆



Rear Right — Control arms

3.0

★★★★☆



Rear Left — Wheel

3.0

★★★★★



Rear Left — Tyre

2.5

★★★★★



Rear Left — Brake pads and rotors

3.0

★★★★★



Ball joints

2.0

★★☆☆☆



Sway bar links

3.0

★★★★★



Any Issues / Defects Found?

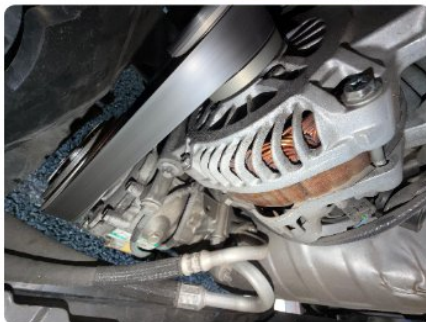
No

Bush need replacement

Engine Bay

3.1 ★

SECTION PHOTOS





Engine oil

Checked level and condition on dipstick.

Coolant

★★★★★

Checked level and colour in reservoir.

Brake oil

★★★★★

Checked level in reservoir.

Steering oil

★★★★★

Checked level in reservoir.

Wiper fluid

★★★★★

Checked level in reservoir.

Transmission fluid

★★★★★

Checked level and condition.

Starter motor

★★★★★

Tested for normal operation.

Drive belt

★★★★★

Inspected for cracks, wear, and tension.

Alternator

★★★★★

Checked for noise and charging output.

Radiator

★★★★★

Inspected for leaks, condition of hoses and cap.

Engine mount

★★★★★

4.0

3.0

3.0

3.0

3.0

3.0

3.0

3.0

3.0

3.0

Checked for excessive movement or cracks.

Injectors

3.0

★★★★★

Inspected for leaks and operation.

Coils

3.0

★★★★★

Inspected for cracks and operation.

Battery

3.0

★★★★★

Checked terminals, corrosion, and charge.

Air filter

3.0

★★★★★

Inspected condition and cleanliness.

Ticking/knocking noise

No

Blow-by detected

No

Misfire detected

No

Fluid leaks detected

No

Shift quality

3.0

★★★★★

Tested shift quality through all gears.

Gear selector

3.0

★★★★★

Checked selector operation and cable.

Vibration noticed

No

Manifold

3.0

★★★★★

Inspected for cracks and leaks.

Any Issues / Defects Found?

No

SECTION PHOTOS

**Catalytic converter**

3.0

★★★★★

Inspected for damage and heat shield condition.

Muffler / Silencer

3.0

★★★★★

Checked for rust, holes, and mounting.

Exhaust pipes

3.0

★★★★★

Inspected for rust, leaks, and condition.

Exhaust hangers / Brackets

3.0

★★★★★

Checked for condition and support.

Exhaust emissions

3.0

★★★★★

EXHAUST EMISSION NORMAL.

Underbody and chassis

3.0

★★★★★

Inspected underbody for rust, damage, and leaks.

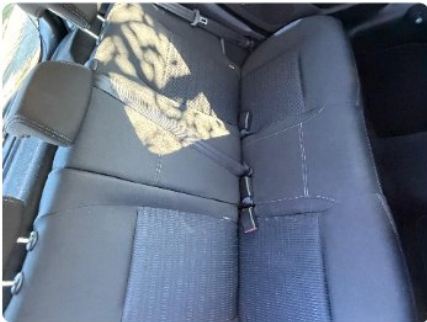
Differential and bushes

3.0

★★★★★

Checked for leaks and condition of bushes.

SECTION PHOTOS

**Driver seat****4.0**

★★★★★

Checked condition, adjustment, and wear.

Passenger seat**4.0**

★★★★★

Checked condition, adjustment, and wear.

Rear seats**4.0**

★★★★★

Checked condition and fold mechanism.

Rear boot**4.0**

★★★★★

Inspected carpet, spare tyre, and jack.

Dashboard

4.0

★★★★★

Checked for cracks, warning lights, and condition.

Steering wheel

3.5

★★★★★

Inspected wear, play, and controls.

Odometer (km)

222222

Air conditioning

4.0

★★★★★

Tested cooling performance and operation.

Infotainment system

4.0

★★★★★

Tested screen, audio, and connectivity.

Heater

4.0

★★★★★

Tested heating performance.

Engine start

4.0

★★★★★

Engine start tested — cold and warm.

Idle

4.0

★★★★★

Monitored idle RPM and stability.

Clutch / Gearbox

4.0

★★★★★

Shifting is normal.

Turbo pressure and boost

4.0

★★★★★

Checked boost pressure and turbo response.

Handbrake

4.5

★★★★★

Tested handbrake hold on incline.

Wheel alignment

4.0

★★★★★

Observed steering pull and tracking.

Brake noise

4.0

★★★★★

Tested for squealing, grinding, or vibration.

Suspension

4.0

★★★★★

Checked for knocks, rattles, and ride comfort.

Abnormal noises

No

Any Issues / Defects Found?

No

Additional Checks

Any repair works detected?

no

Any ticking or knocking noise on engine?

no

Any engine blow-by detected?

no

Any engine misfire detected?

no

Any fluid leaks detected?

no

Any engine vibration noticed?

no

Are there any abnormal noise, knocking or vibration during test drive?

no

Aussie Car Inspect

Aussie Car Inspect
info@aussiecarinspect.com.au

Rating Guide

4.5 – 5.0

Very Good

The item is in optimal working condition with no apparent signs of damage or degradation, in line with the vehicle's age.

3.5 – 4.0

Good

The item is functional with some signs of damage or wear and tear, appropriate for the vehicle's age.

2.5 – 3.0

Fair

The item is operational but shows noticeable damage or wear and tear, consistent with the age of the vehicle.

1.5 – 2.0

Poor

The item is not functioning properly or displays significant damage or wear and tear.

0.5 – 1.0

Very Poor

The item is non-functional or shows severe signs of damage or excessive wear and tear.

Disclaimer

Inspection Nature

Aussie Car Inspect's vehicle inspections are purely visual and non-mechanical. No vehicle component disassembly will occur during the inspection. Despite using industry-recognized fault detection techniques, it is possible that not all vehicle faults will be identified. Our comprehensive inspection covers the vehicle's body, interior, exterior, electrical and engine systems, cooling, exhaust, braking, fuel, steering and suspension, safety, transmission, final drive systems, chassis, and understructure, and includes a road test where applicable.

Limitation of Liability

Aussie Car Inspect, and its inspectors are not accountable for identifying every defect, including those not visually evident during inspection or those that may occur post-inspection. Our report represents the vehicle's condition solely at the inspection time and date. It should not be mistaken for a roadworthy certificate, nor does it encompass manufacturer recall notices. The onus is on the buyer to visually assess the vehicle's condition at the point of sale.

Non-Involvement in Transactions

Aussie Car Inspect, its representatives, or any affiliated company shall bear no responsibility for any agreements, transactions, or discussions between parties concerning any vehicle inspected by us. Additionally, Aussie Car Inspect will not engage in mediating disputes arising from such transactions.

No Warranty on Information

Subject to applicable laws, Aussie Car Inspect offers no warranty, guarantee, or representation regarding the inspection report's accuracy, completeness, reliability, or suitability for any intended purpose. Users of the report agree that Aussie Car Inspect is not liable for any direct, indirect, incidental, or consequential damages or losses that may result from reliance on our report.

Exclusion of Liability

Aussie Car Inspect will not be liable for any loss of use, production, profit, revenue, data, or any anticipated savings, nor for any delays, increased operating costs, or any form of economic loss resulting directly or indirectly from the use of our inspection service or report. By engaging Aussie Car Inspect for vehicle inspection services, you acknowledge and accept these terms as part of our service agreement.

Information Sources and Accuracy Limitations

Information is sourced from the PPSR, third-party databases, diagnostic tools, and available service records at the time of inspection. Aussie Car Inspect uses advanced equipment to assess the vehicle, where applicable, at the time of inspection. While every effort is made, we do not guarantee the accuracy, completeness, or future condition of the vehicle.

Terms & Conditions

1. Nature of the Service

Aussie Car Inspect provides pre-purchase inspection services only. Inspections are visual, non-invasive assessments of the vehicle's condition at the time of inspection. Aussie Car Inspect does not dismantle components or guarantee detection of all faults.

2. Scope & Limitations

Inspections are limited in scope and cannot guarantee future performance, durability, or reliability of the vehicle. Vehicles may develop faults or breakdowns after inspection due to normal wear and tear, latent defects, or pre-existing conditions not visible at the time. Aussie Car Inspect accepts no liability in such cases. Inspections are a snapshot in time only and should not be relied upon as a guarantee of condition.

3. Inspector Oversight & Complaints

Inspectors perform their duties with care and diligence. However, inspections are subject to human judgment and not all issues can or will be identified. Minor or cosmetic issues (e.g., scratches, small fluid marks, trim wear, minor noises) are not considered material and do not form grounds for complaint. Aussie Car Inspect is not responsible for any perceived omissions, oversights, or subsequent faults discovered after the inspection.

4. No Liability for Breakdown or Repairs

Aussie Car Inspect is not liable if the vehicle experiences breakdowns, faults, or repair needs after the inspection. Aussie Car Inspect is not responsible for repair costs, towing, replacement vehicles, or any consequential losses.

5. Customer Responsibilities

Customers must provide accurate information and ensure vehicle/seller availability. If the inspector cannot access the vehicle due to incorrect details or seller unavailability, the inspection will be marked as completed and charges will apply.

6. Inspection Report Use

Reports are for informational purposes only. They are not to be treated as warranties, guarantees, or insurance of vehicle condition. Customers must make their own purchase decisions and are encouraged to seek independent advice.

7. Exclusion of Liability

To the fullest extent permitted by law, Aussie Car Inspect excludes all liability for any claims for refunds or compensation outside of its published Refund Policy, losses arising from reliance on the inspection report, and vehicle breakdowns, repair costs, or financial loss following inspection. Aussie Car Inspect's liability, if any, is strictly limited by the Refund Policy and cannot exceed what is stated therein.

8. Governing Law

These Terms are governed by the laws of the state or territory in which the inspection is conducted. Any disputes must be resolved in that jurisdiction. For a detailed understanding of our services, please refer to our Refund Policy.
